



MILESTONE

H E L P I N G
P A T I E N T S



Distributed by:
Axlab A/S
+45 35 43 18 81
axlab@axlab.dk
www.axlab.dk

Axlab

YOUR VISION.
OUR INSPIRATION

**NOW WITH
CONTINUOUS
LOADING!**

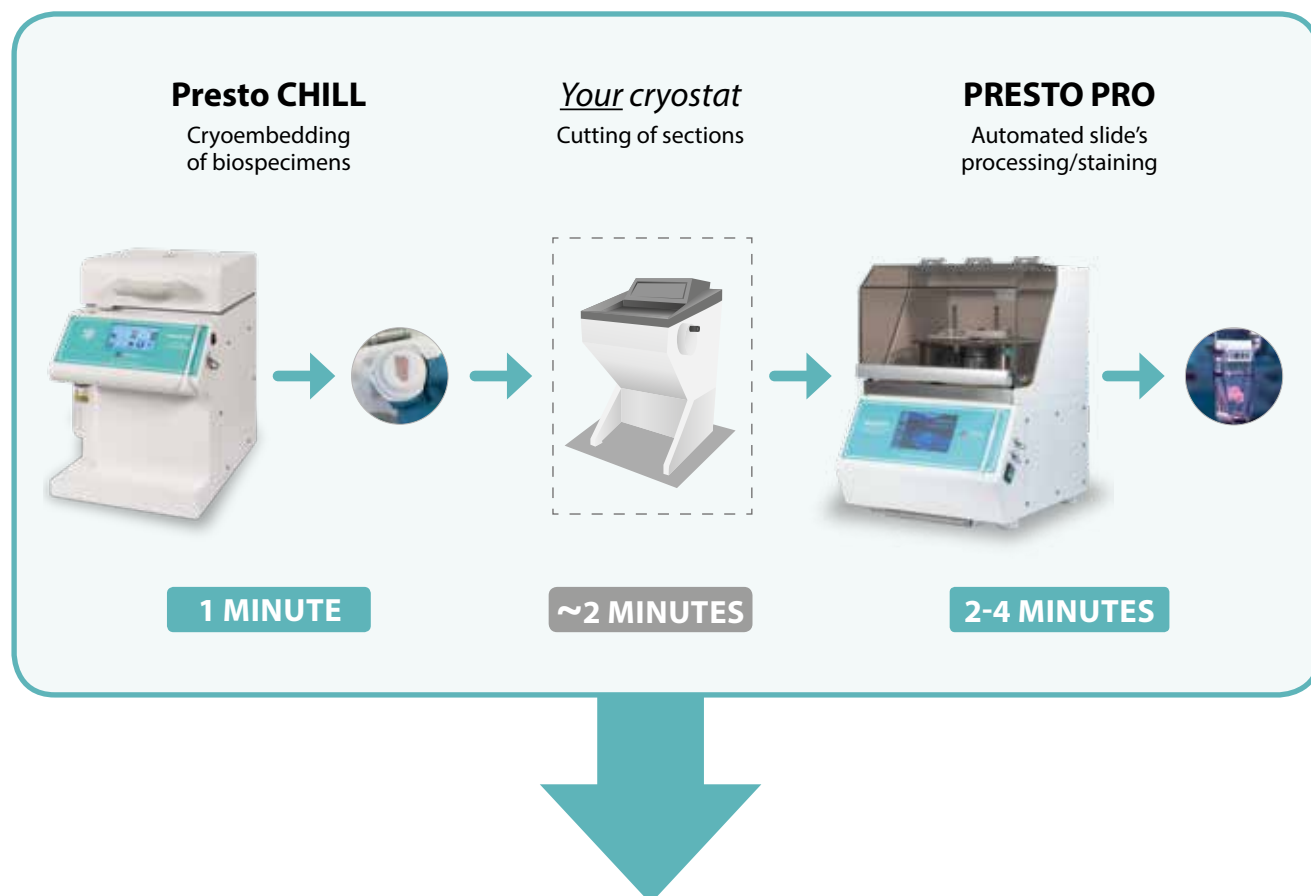
PRESTO PRO

Innovative processor/stainer
for frozen sections of permanent-like quality

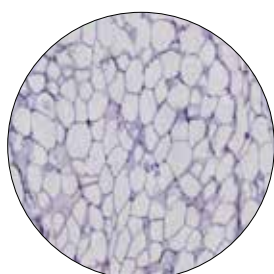
www.milestonemed.com

THE PRESTO TECHNOLOGY: **PRESTO PRO**

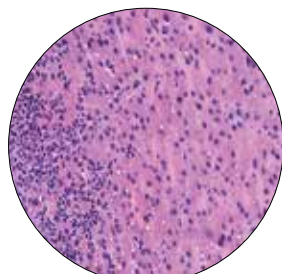
The goal of frozen sections permanent-like quality can be achieved by combining the advanced cryoembedding technology of the **Presto CHILL** unit, with the performance of the **PRESTO PRO** automatic processor/stainer.



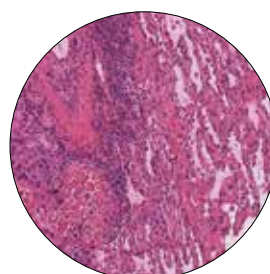
From fresh biospecimens to six stained frozen sections of permanent-like quality in less than **10 minutes**.



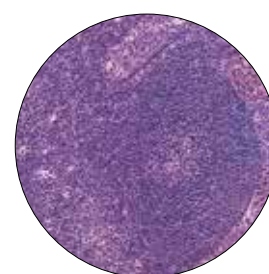
Human breast
40x



Human liver
40x



Human lung
20x



Human lymphnode
20 x

THE FINAL STEP TOWARDS FROZEN SECTIONS OF PERMANENT-LIKE QUALITY

Conventional frozen sections provide a short turnaround time of 15-20 minutes, but with the disadvantage of a lower diagnostic quality with respect to paraffin sections due to cryoembedding artifacts and the variability of staining protocols. One of the main reasons for their lower quality, versus a FFPE section, is that frozen sections are only stained while FFPE sections are first processed (fixation + dehydration + clearing) and subsequently stained. It is now possible to produce frozen sections with a permanent-like quality by combining the artifact-free freezing of tissues of the PrestoChill unit with the outstanding features of the all-new **PRESTO PRO** processing/staining unit. **PRESTO PRO** is an innovative benchtop processor/stainer for high-quality frozen sections. It features a standardized approach to **processing the slide** with FineFIX (*European Patent EP 1455174B1 - US patent US 20050074422*), a patented Milestone solution, followed by fully automated staining protocols.

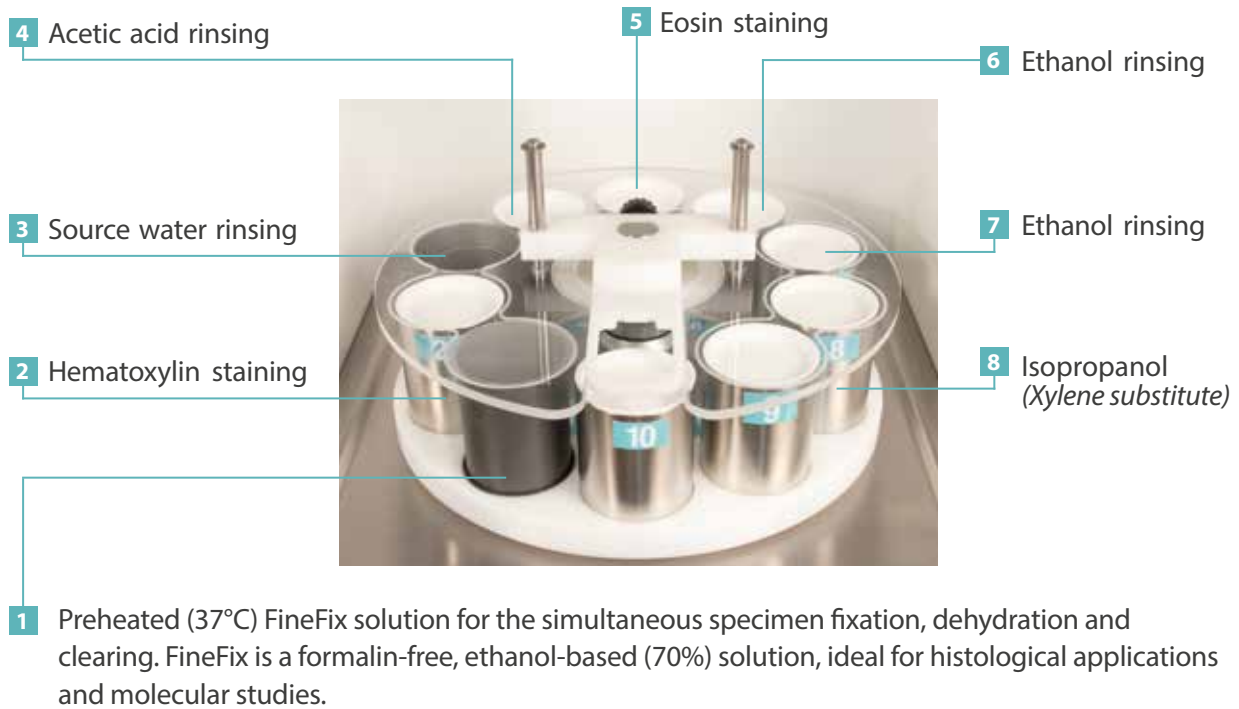


The new PRESTO PRO processor/stainer

NO COMPARISON WITH AN AUTOMATIC CONVENTIONAL OR MANUAL STAINER

- ▶ PRESTO PRO is a **slide processor** combined with an automated stainer.
- ▶ Standardized, optimized staining results are obtained **independently from the operator's skills**.
- ▶ The **fully programmable protocols** fit every tissue and/or pathologist's requirement.
- ▶ The reagents can be **totally managed and controlled**.
- ▶ It is an **open system**. Besides FineFIX, all the other reagents used are your own reagents.
- ▶ It is safe: **xylene is not required**. Isopropanol is its substitute.
- ▶ A fully **downloadable documentation** is available for each run.

THE UNIQUE PROCESSING/STAINING SETUP OF THE PRESTO PRO



SIMPLE. INTUITIVE OPERATION MAKES EVERYONE AN EXPERT



Position the slide rack over the FineFIX processing vessel.



Close the cover.



Press START.



After 2'17" in high quality mode (in 3'51" in ultra-quality mode) six slides are processed/stained, ready for coverslipping and examination.

NEW FEATURE: PRESTO PRO WITH CONTINUOUS LOADING

A new feature to increase throughput for high volume frozen sections labs. Simply install a double arm to the PRESTO PRO carousel and the unit is ready for operation. Loading of a new rack can start every 1'45".



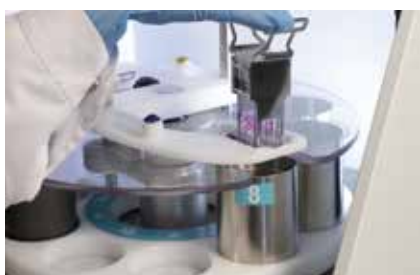
1 Select "Continuous Loading".



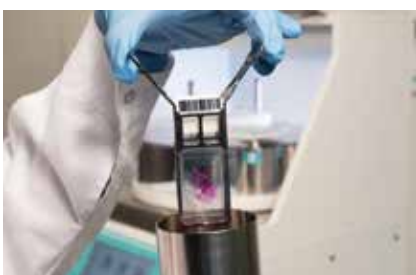
2 Load first rack in FineFIX container.



3 After 1'45" load the second rack in the FineFIX container.



4 After 2'17" the first rack is ready for coverslipping.



5 After 4' from the start of the first rack, the second rack is ready for coverslipping.

CHECK FOR BEST
OPERATING PROCEDURES
FOR SPECIAL APPLICATIONS



FULLY AUTOMATED PROCESSING PLUS STAINING TIMES FOR 6 SLIDES

SINGLE ARM

High quality protocol: **2'17"** for six slides

High quality throughput: **144** slides/hour
(average of 5 minutes for 12 slides = 144 slides every 60 minutes)

Ultra quality protocol: **3'50"** for six slides

Ultra quality throughput: **90** slides/hour
(average of 8 minutes for 12 slides = 90 slides every 60 minutes)



HIGH-QUALITY
PROTOCOL



ULTRA-QUALITY
PROTOCOL

DOUBLE ARM CONTINUOUS MODE LOADING

High quality protocol: **2'20"** for six slides

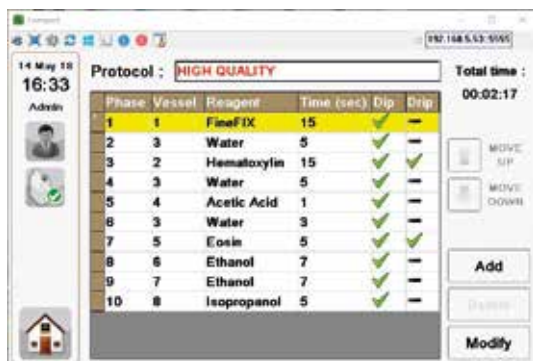
High quality throughput: **190** slides/hour
(average of 18'30" for 60 slides = 194 slides every 60 minutes)



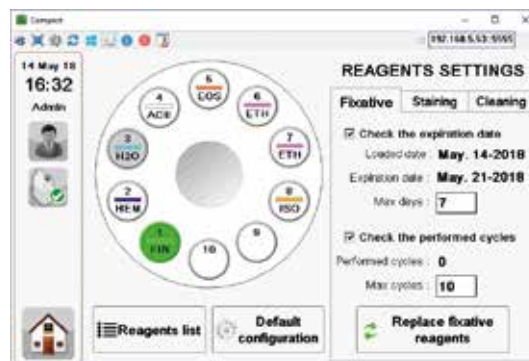
CONTINUOUS MODE
HIGH-QUALITY PROTOCOL

■ FIRST RACK ■ SECOND RACK

EASILY OPERATED



The operator can easily set protocols to fit lab's requirements.



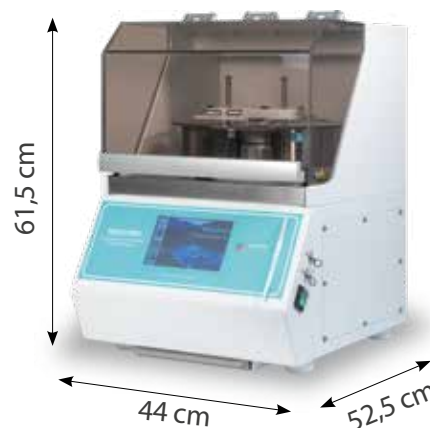
User-friendly intuitive software.

BIBLIOGRAPHY ON PRESTO TECHNOLOGY

- "Next Generation Frozen." Gerhard Seitz. Dept of Pathology – Klinikum Bamberg.
- "Cryoembedder, automatic processor/stainer, liquid nitrogen freezing and manual staining for frozen section examination." "A comparative study." Renne SL et al. Dept of Pathology – fondazione IRCCS Istituto Nazionale dei Tumori, Milan, Italy.
- "Comparación del sistema PrestoCHILL™ frente al de congelación en criostato, en el estudio de la biopsia renal." M. Manase' et al Servicio de Anatomía. Hospital General Universitari de Castelló.
- "Valorización de biopsias de rinones de donante previo al trasplante renal. Comparación y validez de diferentes métodos de congelación." Ana Mzrquez Lillo et al Dpto de Anatomía patológica. HU Fundacion Jimenez Diaz Quiron Salud.
- "Freezing skin tissue in Mohs Micrographic Surgery using PrestoCHILL." V.C. Villaverde et al, Hospital De Cruces Bilbao, Spain.
- "Mohs and the benefit of new embedding and staining systems." Guy orchard, St.Thomas Hospital, London, UK.

TECHNICAL SPECIFICATIONS

- Processor/Stainer for up to 6 slides
- 4,3" touchscreen terminal, 1 USB port
- Weight: 42Kg (92.6 lbs)
- Power supply: 230V~ 50/60Hz or 115V~ 60Hz (180W)
- Dimensions:
Height: 61,5 cm (24.2") (with opened cover 86 cm / 33.8")
Width: 44 cm (17.3")
Depth: 52,5 cm (20.6")



Headquarters

MILESTONE Srl
Via Fatebenefratelli, 1/5
24010 Sorisole (BG) - Italy
Tel: +39 035 4128264
Fax: +39 035 575498
email: marketing@milestonemedsrl.com

US Operations

MILESTONE MEDICAL TECHNOLOGIES, INC.
6475 Technology Avenue
Suite F, Kalamazoo, MI 49009 - USA
Tel: 269-488-4950 - Toll-free: 866-995-5300
Fax: 269-488-4949
email: info@milestonemed.com