

What does the self test look like?

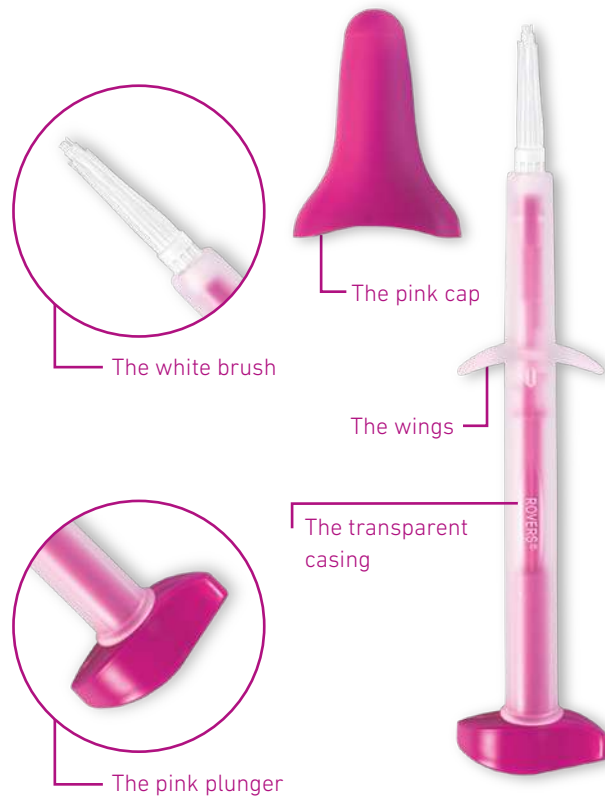
The Evalyn Brush is about 18 cm in length and consists of a transparent case with wings. Within the casing is a pink stick with a pink plunger at one end and a white brush at the other. At the brush ends, a pink cap can be clicked onto the case. When you take off the cap, you can push the white brush out of the case by pushing the pink plunger towards the transparent casing.



Rovers Medical Devices B.V.
Lekstraat 10, 5347 KV Oss
The Netherlands
T +31 (0)412 648 870
info@roversmedicaldevices.com
www.roversmedicaldevices.com

evalyn[®]brush

Instructions for the home test



Rovers® Evalyn®Brush is a patented product and a registered design.

Rovers® and Evalyn®Brush are registered trademarks of Rovers Medical Devices B.V. based in Oss, the Netherlands.

CE
0044

REF 380500131

Version EC-2021-03-EN



evalyn[®]brush

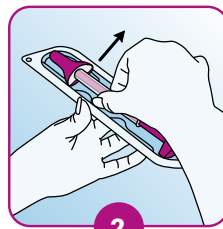
The Evalyn Brush is a sterile device that allows you to carry out tests yourself at home. Using the Evalyn Brush, you can retrieve vaginal cell material simply and painlessly. This cell material is then analysed in a professional laboratory.

Important notes

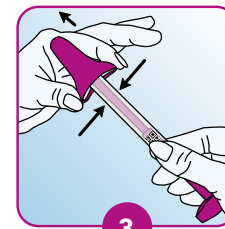
- Do not use if the packaging of the Evalyn Brush is damaged or if the expiry date has passed.
- Do not use during menstruation.
- Do not use during pregnancy or for three months following pregnancy.
- Do not use any other vaginal products for at least two days before using the Evalyn Brush. Vaginal contraceptives, condoms and water-based lubricants can be used as normal.
- For single use only.
- Re-use can result in infection and/or incorrect diagnosis.



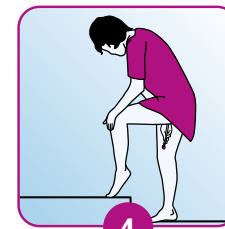
Wash your hands before usage.



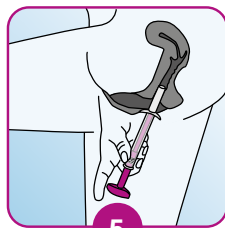
Remove the Evalyn Brush from the packaging. Do not throw the packaging away, as it is necessary for sending the Evalyn Brush to the laboratory after usage.



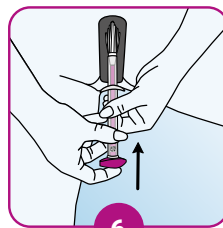
Press the sides of the pink cap with your thumb and index finger to remove the pink cap from the Evalyn Brush. Ensure that you do not touch the white brush of the Evalyn Brush with your hands!



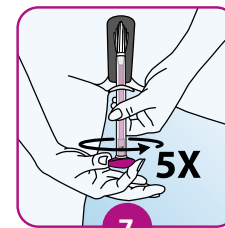
Obtain the sample whilst in a standing position. Assume a comfortable stance (e.g. as if you were about to insert a tampon).



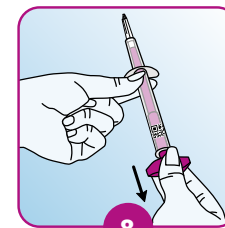
Spread your labia with one hand, and with the other, insert the Evalyn Brush into your vagina until the wings touch your labia.



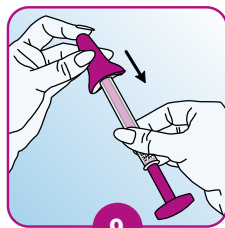
Hold the transparent casing with one hand, and with your other hand, push the pink plunger in the direction of the transparent casing. You will hear and feel a click when the brush is in the right position with the pink plunger directly against the casing.



Turn the pink plunger five rotations in the same direction. After each rotation, you will hear a click. This helps you count the rotations. After turning the plunger five times, carefully remove the Evalyn Brush.



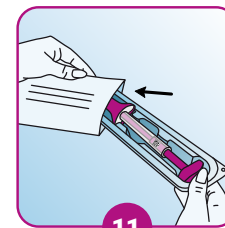
Hold the transparent casing with one hand, and with your other hand, pull on the pink plunger until the white brush disappears into the casing. When doing so, do not touch the top part of the Evalyn Brush above the wings.



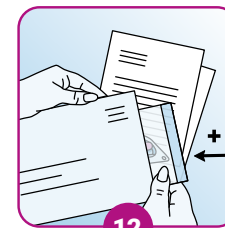
Hold the transparent end to ensure the white brush does not extend again. Place the pink cap back on the Evalyn Brush using your thumb and index finger. You will hear a click when it is properly in place.



Put the Evalyn Brush back inside the packaging.



Place the packaging containing the Evalyn Brush into the plastic bag provided and seal it.



Use the return envelope to send the plastic bag containing the Evalyn Brush together with other required information.